

MATERIAL BUY-OUT LIST

ITEM #	DESCRIPTION	MAKE / PART NUMBER	QTY	SUPPLIED BY	INSTALLED BY
—	FAUCET	T&S BRASS / B-1110	1	OTHERS	EUROBAR
—	GLASS RINSER	MICRO MATIC / GR-1581	1	OTHERS	EUROBAR

EBCDS12 - CRAFT DUMP SINK

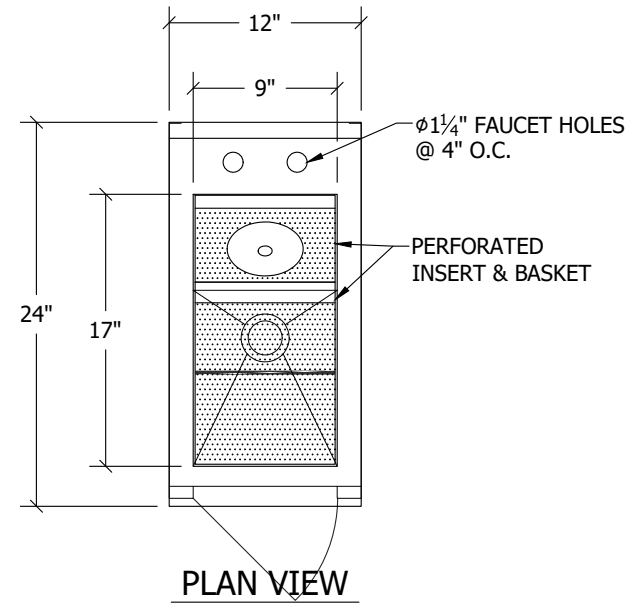
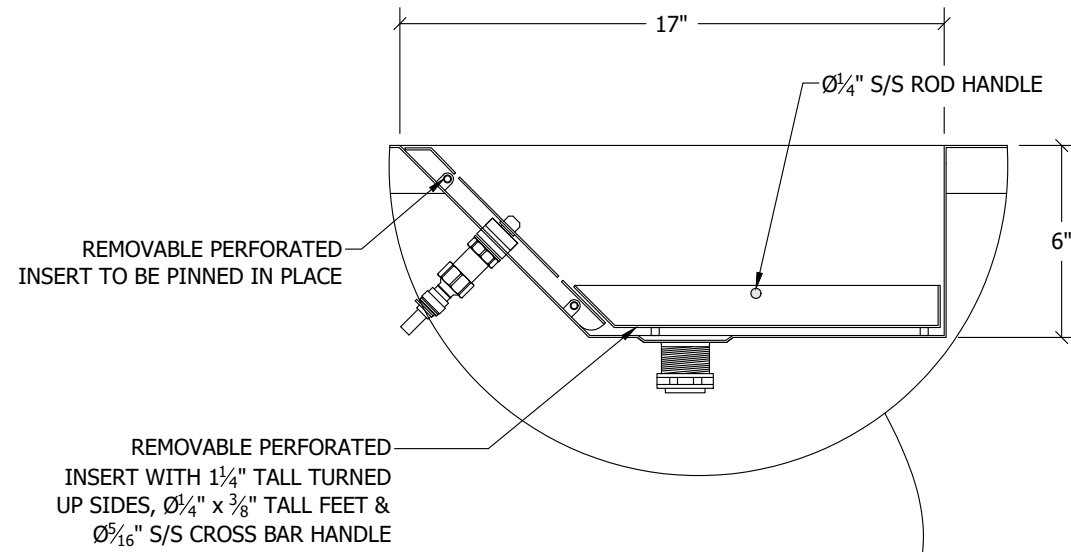
ITEM ##### - SCALE: # = 1'-0" - PG 1 OF 2

MATERIALS & FINISHES

(WHERE APPLICABLE)

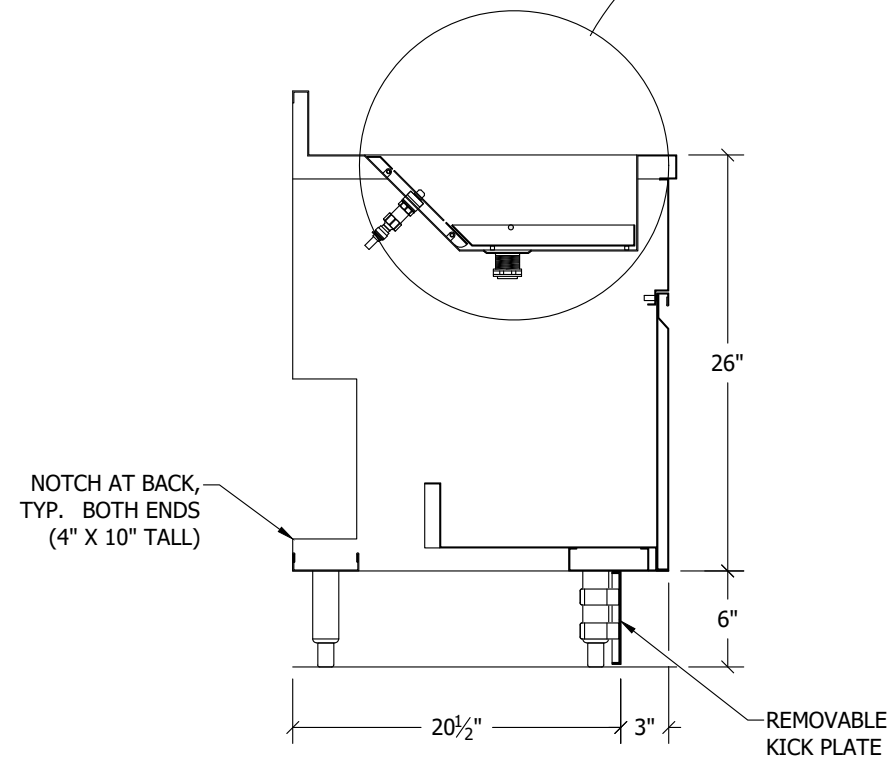
- WORKING SURFACE & TUB(S): 16GA 304 SERIES S/S, #4 FINISH
- PERFORATED INSERTS: 18GA 304 SERIES S/S, #4 FINISH
- UNDERSTRUCTURE: 16GA GALVANIZED
- CABINET BODY & FLOOR SHELF: 18GA S/S, #4 FINISH
- LEGS: ϕ 1-5/8" 16GA S/S TUBING & ADJ. BULLET FEET
- FAUCET(S): PROVIDED BY OTHERS, INSTALLED BY EUROBAR
- DRAIN(S): BY EUROBAR
 - ϕ 1 1/2" BASKET DRAIN, 1 1/2" NPT - QTY (1)
- MOUNTING CLIPS: 1 EA PER 24" OF BACKSPLASH

SHIP BUY OUTS TO
FACTORY FOR
INSTALLATION



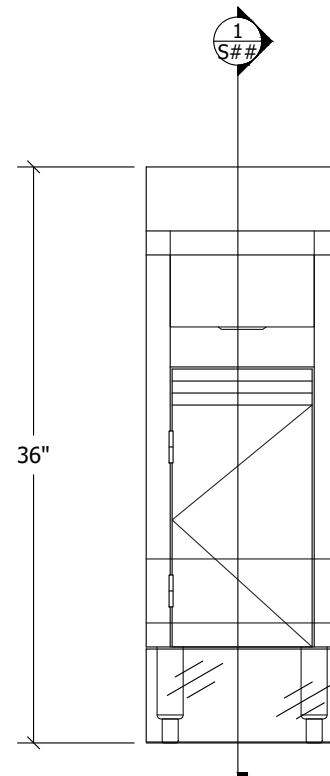
REMOVABLE PERFORATED INSERT WITH 1/4" TALL TURNED UP SIDES, 3/8" TALL FEET & 5/16" S/S CROSS BAR HANDLE

PLAN VIEW

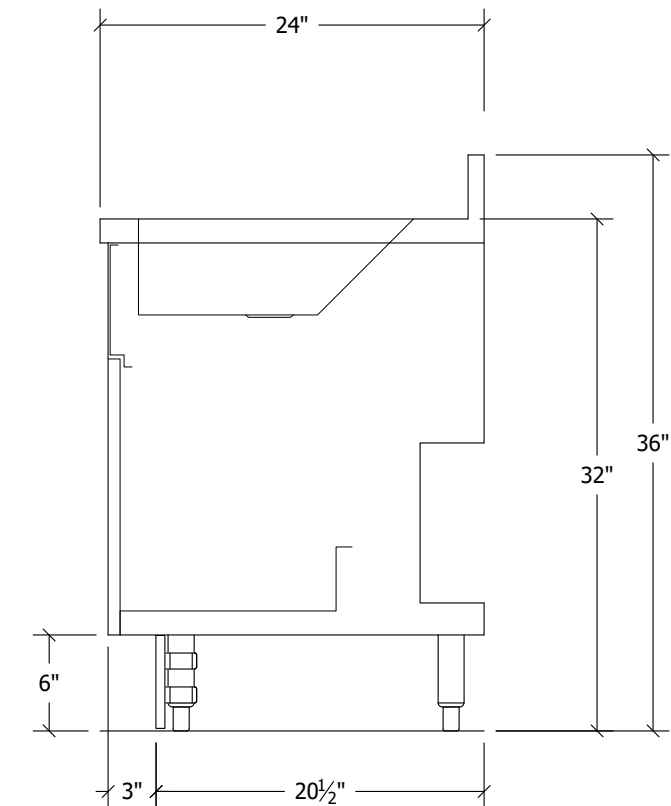


SECTION VIEW

Scale: # = 1'-0"



FRONT VIEW



SIDE VIEW

CUSTOMER:

ITEM NO: EBCDS12
EUROBAR
MASTER DRAWING
11x17 PAGE FORMAT

16
MAIN SCALE: 1
SECTION SCALE: 1

REVISIONS	

Proj. Mgr:
Drawn By:
Drawn Date:

..Revit Families (Current)\Eurobar logo.png