

**MATERIAL BUY-OUT LIST**

ITEM #	DESCRIPTION	MAKE / PART NUMBER	QTY	SUPPLIED BY	INSTALLED BY
—	14" S/S DRAWER SLIDES	CHG / S26-0014	1	EUROBAR	EUROBAR

**EBFSU18 - WORK STATION**

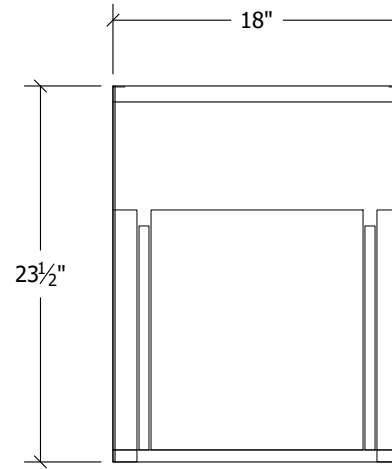
ITEM ##### - SCALE: # = 1'-0"

**MATERIALS & FINISHES**

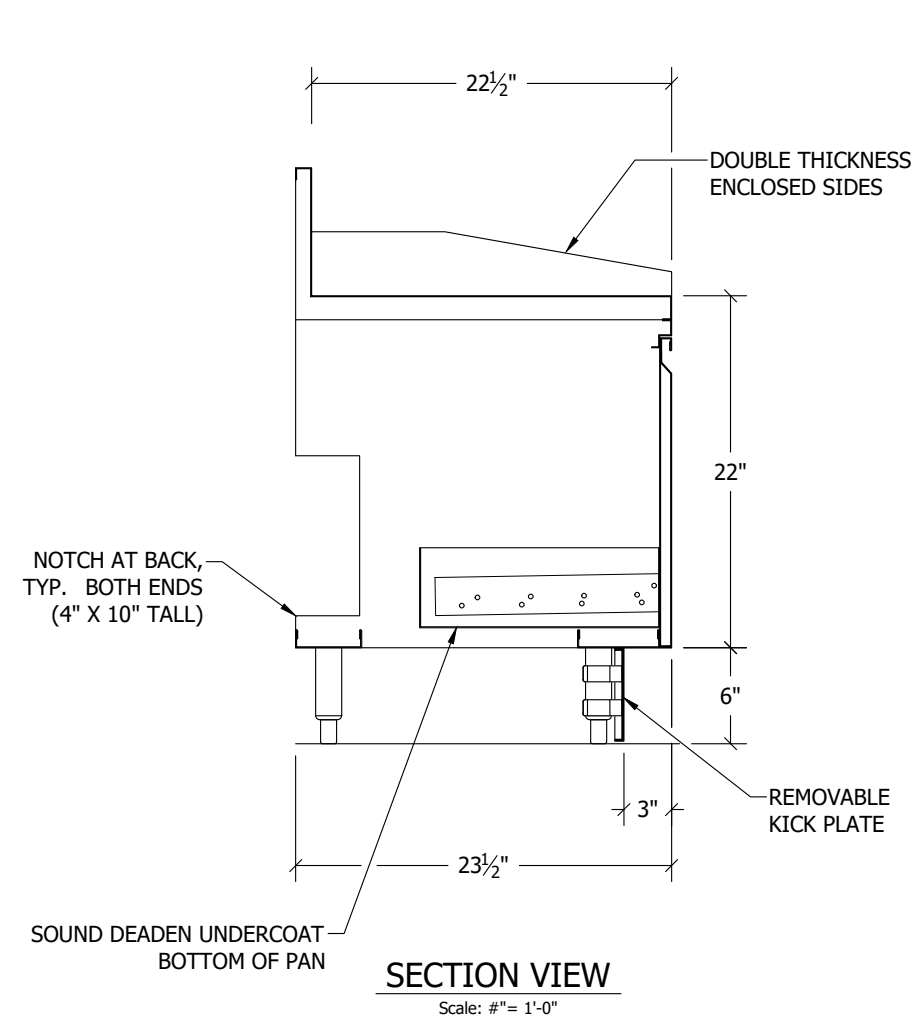
(WHERE APPLICABLE)

- WORKING SURFACE: 16GA 304 SERIES S/S, #4 FINISH
- UNDERSTRUCTURE: 16GA GALVANIZED
- CABINET BODY: 18GA S/S, #4 FINISH
- DRAWER(S): 18GA S/S, #4 FINISH
  - SOUND DEADEN UNDERCOAT REQUIRED AT BOTTOM OF DRAWER PAN ONLY (SEE NOTE BELOW)
- LEGS:  $\phi$ 1-5/8" 16GA S/S TUBING & ADJ. BULLET FEET
- MOUNTING CLIPS: 1 EA PER 24" OF BACKSPLASH

**1 EACH**

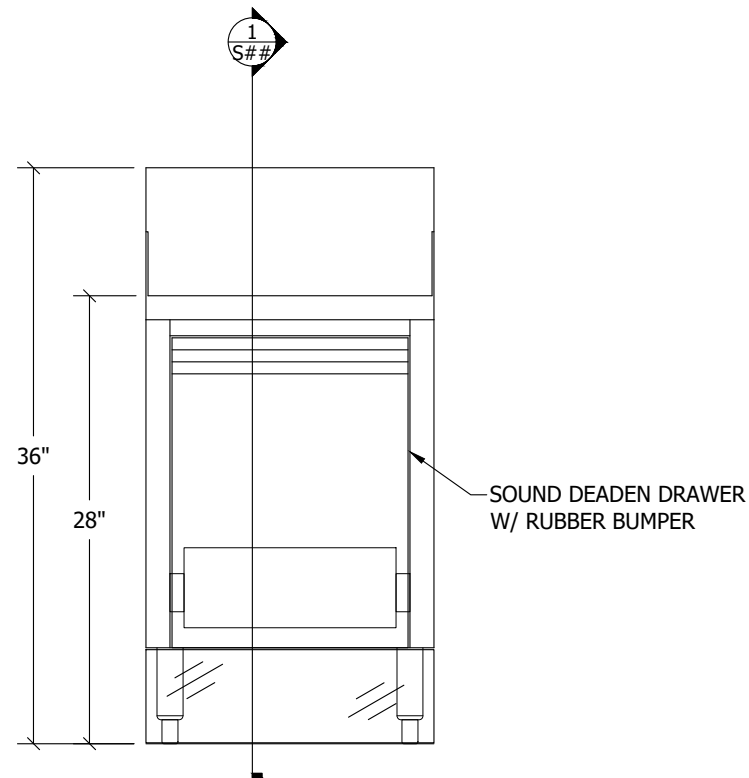


**PLAN VIEW**

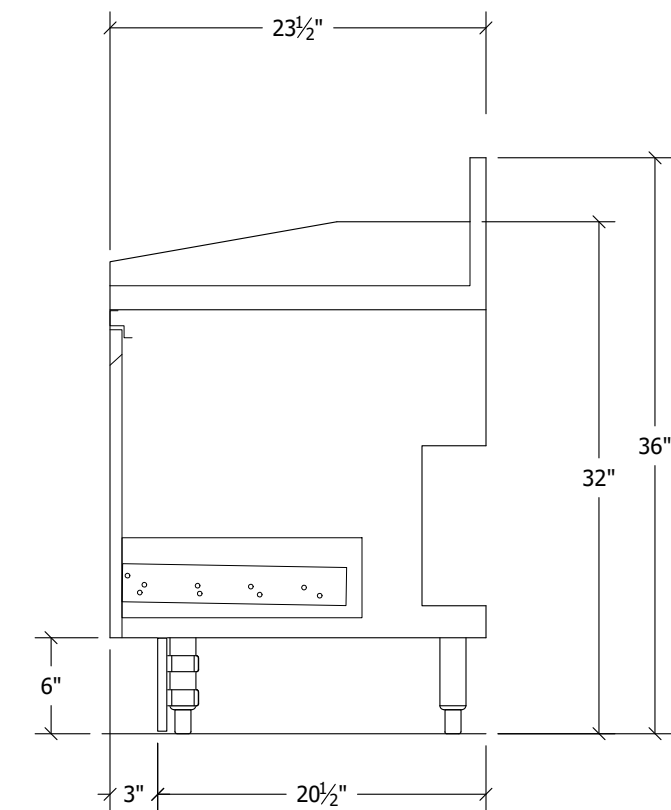


**SECTION VIEW**

Scale: # = 1'-0"



**FRONT VIEW**



**SIDE VIEW**

..(Revit Families (Current))Eurobar logo.png

CUSTOMER:

**ITEM NO: EBFSU18**  
**EUROBAR**  
 MASTER DRAWING  
 1.1x17 PAGE FORMAT

**32**  
 MAIN SCALE: 1  
 SECTION SCALE: 1

REVISIONS	

Proj. Mgr:	
Drawn By:	
Drawn Date:	