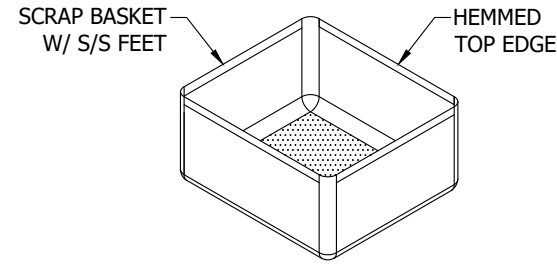


SHIP BUY OUTS TO  
FACTORY FOR  
INSTALLATION



SCRAP BASKET DETAIL  
SCALE: N.T.S.

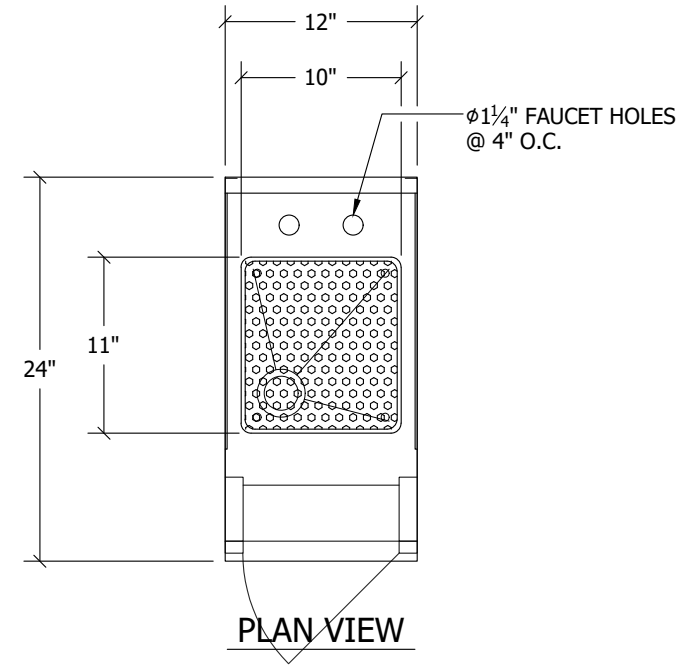
MATERIAL BUY-OUT LIST					
ITEM #	DESCRIPTION	MAKE / PART NUMBER	QTY	SUPPLIED BY	INSTALLED BY
—	FAUCET	T&S BRASS / B-1110	1	OTHERS	EUROBAR

EBHS12 - HAND SINK  
ITEM ##### - SCALE: #'' = 1'-0''

MATERIALS & FINISHES

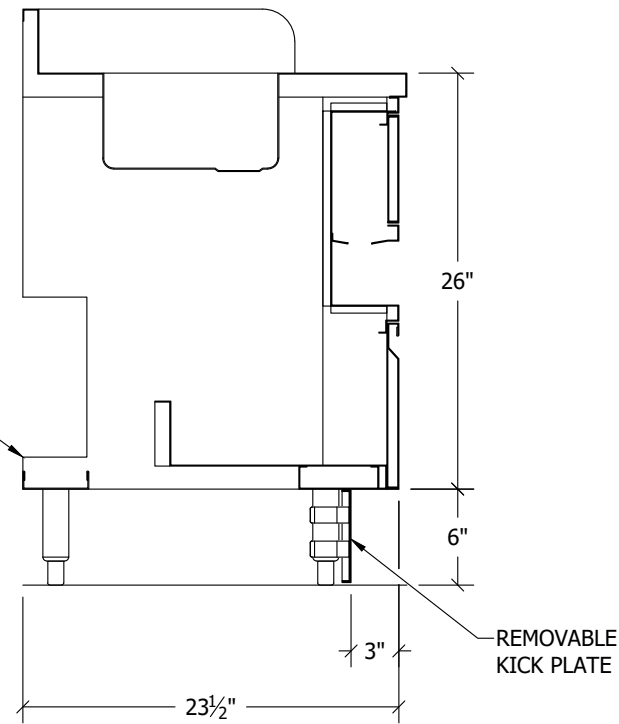
(WHERE APPLICABLE)

- WORKING SURFACE & TUB(S): 16GA 304 SERIES S/S, #4 FINISH
- UNDERSTRUCTURE: 16GA GALVANIZED
- CABINET BODY & FLOOR SHELF: 18GA S/S, #4 FINISH
- LEGS:  $\phi 1-5/8$ " 16GA S/S TUBING & ADJ. BULLET FEET
- FAUCET(S): PROVIDED BY OTHERS, INSTALLED BY EUROBAR
- DRAIN(S): BY EUROBAR
- $\phi 1\frac{1}{2}$ " BASKET DRAIN,  $1\frac{1}{2}$ " NPT - QTY (1)
- MOUNTING CLIPS: 1 EA PER 24" OF BACKSPLASH



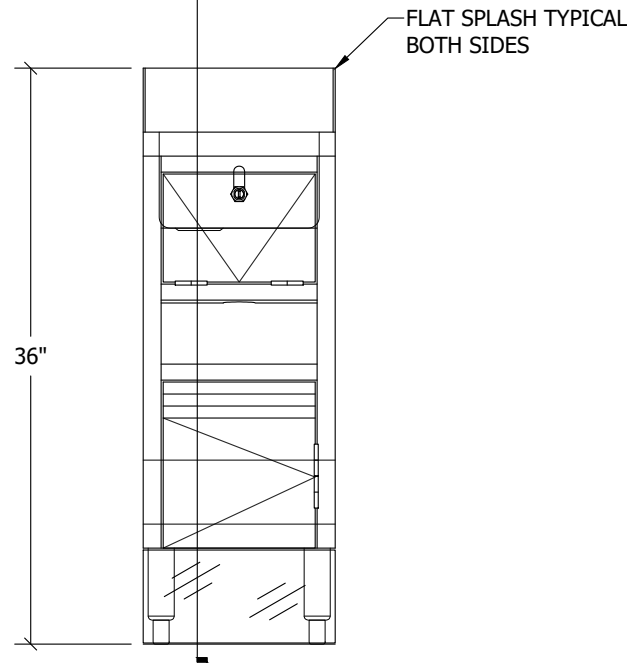
1 EACH

NOTCH AT BACK,  
TYP. BOTH ENDS  
(4" X 10" TALL)

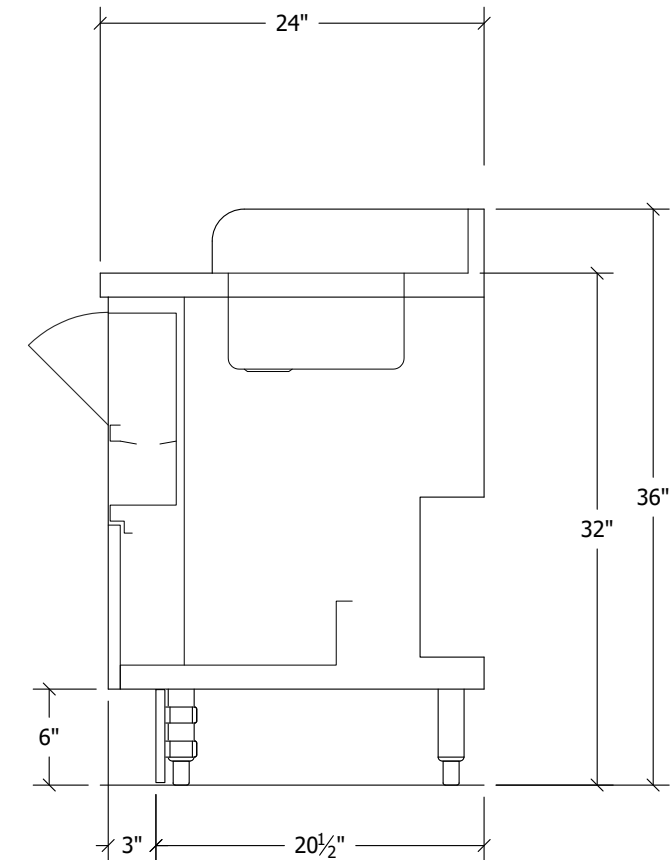


SECTION VIEW  
Scale: #'' = 1'-0''

1  
S###



FRONT VIEW



SIDE VIEW

..Revit Families (Current)\Eurobar logo.png

CUSTOMER:

ITEM NO: EBHS12  
MAIN SCALE: 1  
SECTION SCALE: 1  
EUROBAR  
MASTER DRAWING  
11x17 PAGE FORMAT

18

REVISIONS

Proj. Mgr:	
Drawn By:	
Drawn Date:	