

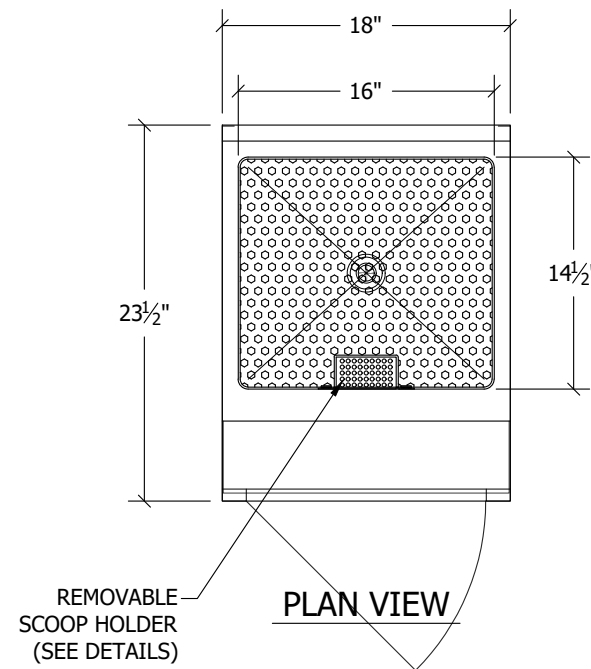
**EBIB18 - ICE BIN**  
ITEM ##### - SCALE: # = 1'-0"

**MATERIALS & FINISHES**

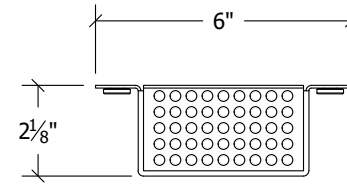
(WHERE APPLICABLE)

- WORKING SURFACE & TUB(S): 16GA 304 SERIES S/S, #4 FINISH
- PERFORATED INSERT: 18GA 304 SERIES S/S, #4 FINISH
- UNDERSTRUCTURE: 16GA GALVANIZED
- CABINET BODY & FLOOR SHELF: 18GA S/S, #4 FINISH
- LEGS:  $\phi$ 1-5/8" 16GA S/S TUBING & ADJ. BULLET FEET
- DRAIN(S): BY EUROBAR
  - $\phi$ 1 1/2" BASKET DRAIN, 1 1/2" NPT - QTY (1)
- MOUNTING CLIPS: 1 EA PER 24" OF BACKSPLASH

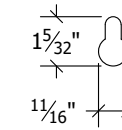
**1 EACH**



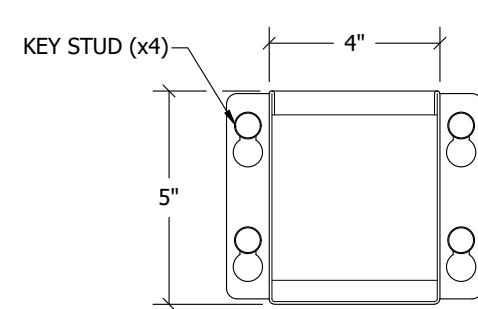
**PLAN VIEW**



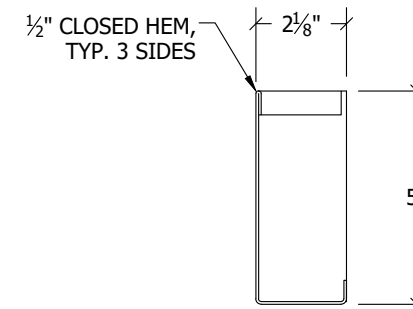
**PLAN VIEW**



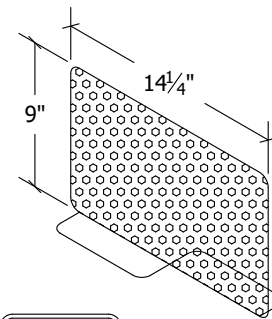
**KEY HOLE DETAIL**



**FRONT VIEW**



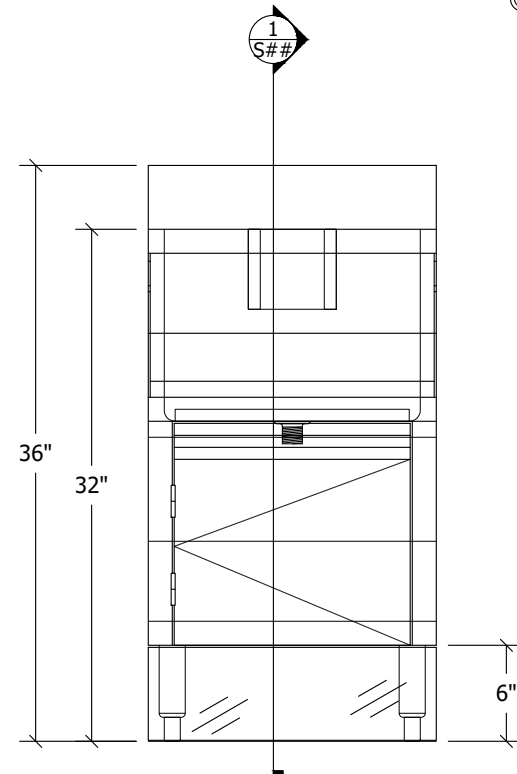
**SECTION VIEW**



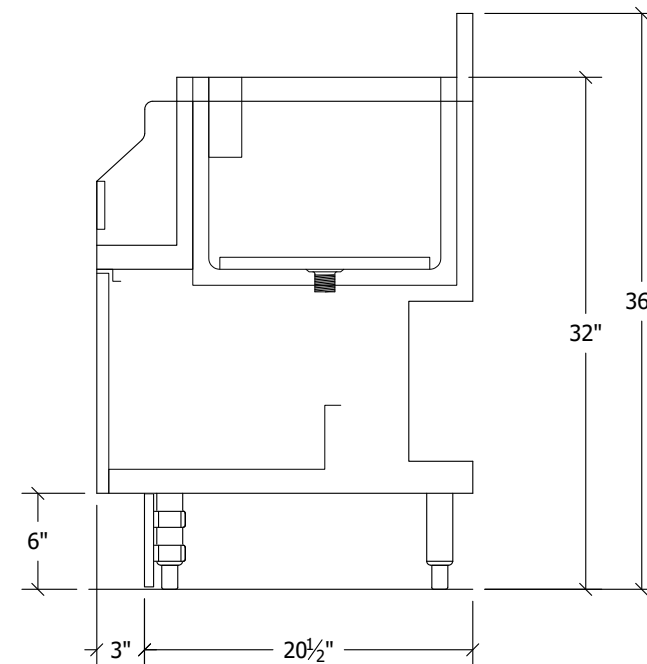
**2 EACH**

**SCOOP HOLDER DETAILS**

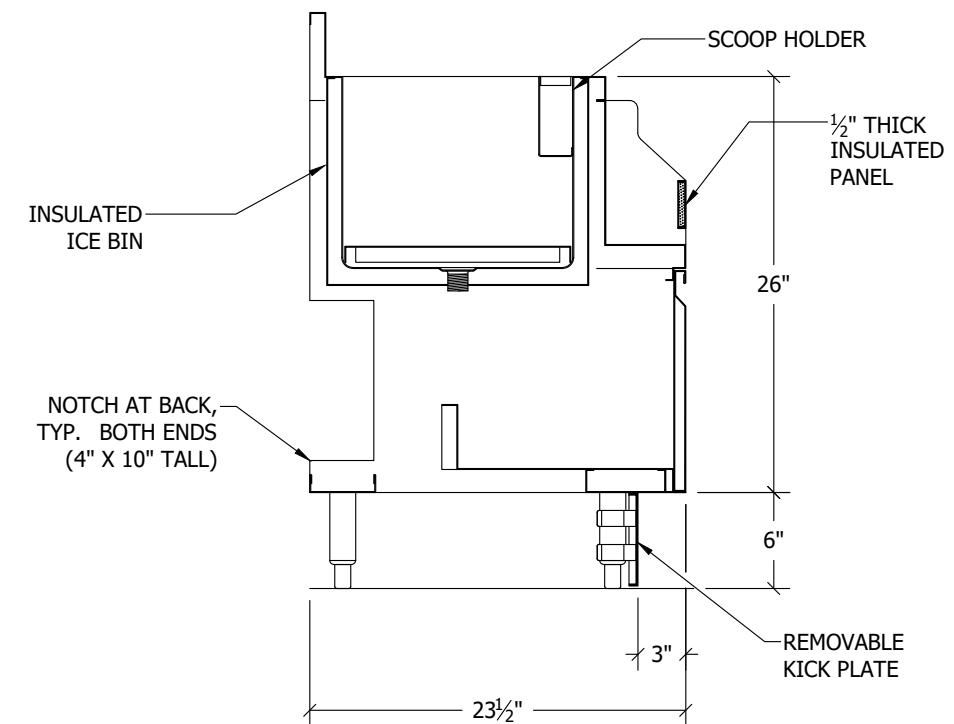
**DIVIDER DETAIL**



**FRONT VIEW**



**SIDE VIEW**



**SECTION VIEW**

Scale: # = 1'-0"

ITEM NO: EBIB18  
MAIN SCALE: 1  
SECTION SCALE: 1

**21**

REVISIONS	

Proj. Mgr:  
Drawn By:  
Drawn Date:

CUSTOMER:

EUROBAR  
MASTER DRAWING  
11x17 PAGE FORMAT

Revit Families (Current)\Eurobar logo.png