

**EBIB24 - ICE BIN**

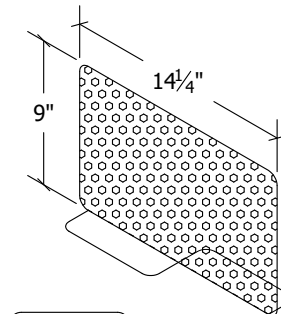
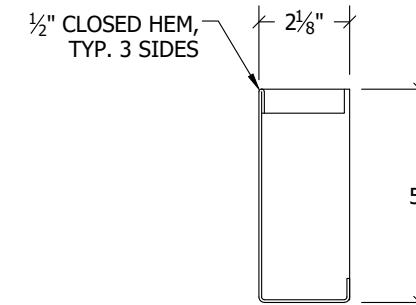
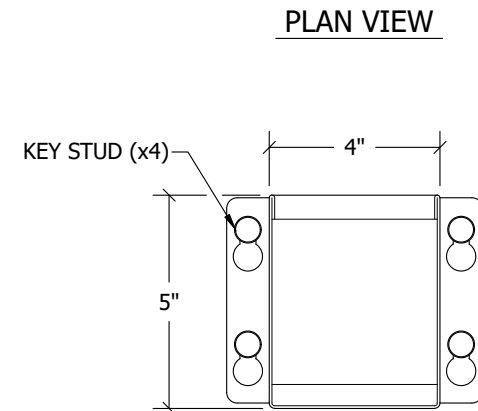
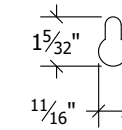
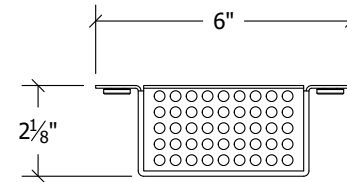
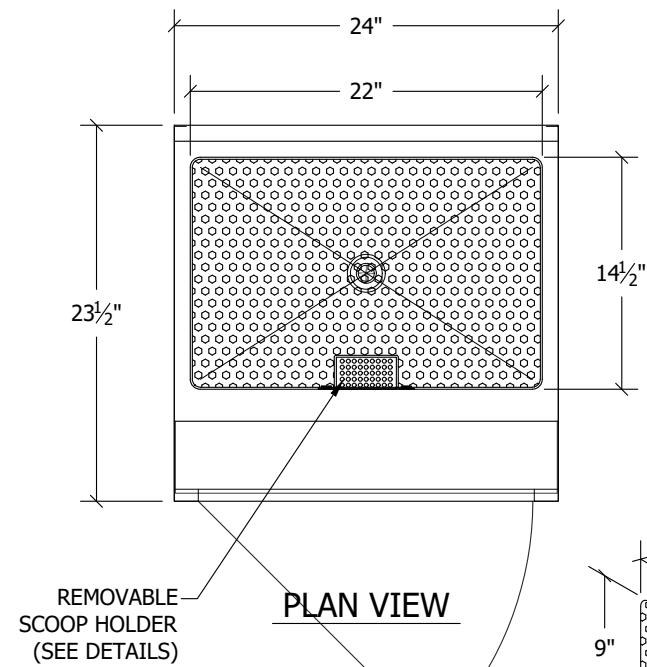
ITEM ##### - SCALE: # = 1'-0"

**MATERIALS & FINISHES**

(WHERE APPLICABLE)

- WORKING SURFACE & TUB(S): 16GA 304 SERIES S/S, #4 FINISH
- PERFORATED INSERT: 18GA 304 SERIES S/S, #4 FINISH
- UNDERSTRUCTURE: 16GA GALVANIZED
- CABINET BODY & FLOOR SHELF: 18GA S/S, #4 FINISH
- LEGS:  $\phi$ 1-5/8" 16GA S/S TUBING & ADJ. BULLET FEET
- DRAIN(S): BY EUROBAR
  - $\phi$ 1 1/2" BASKET DRAIN, 1 1/2" NPT - QTY (1)
- MOUNTING CLIPS: 1 EA PER 24" OF BACKSPLASH

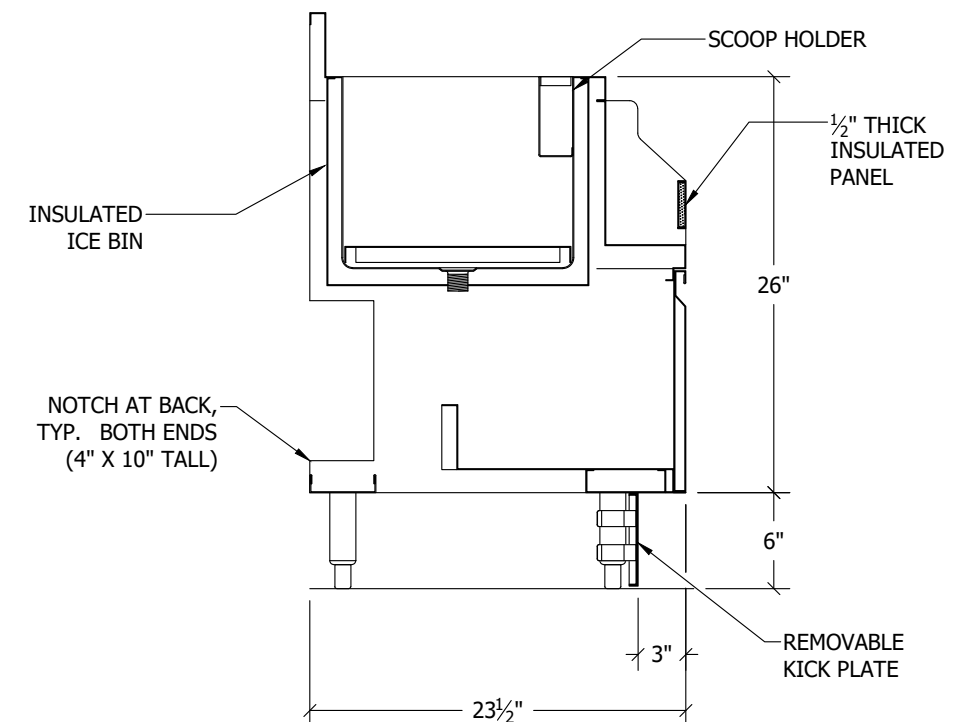
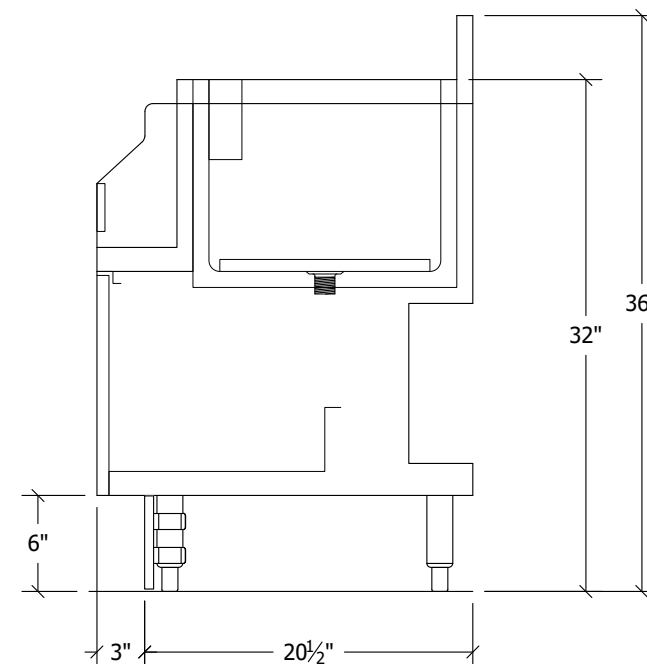
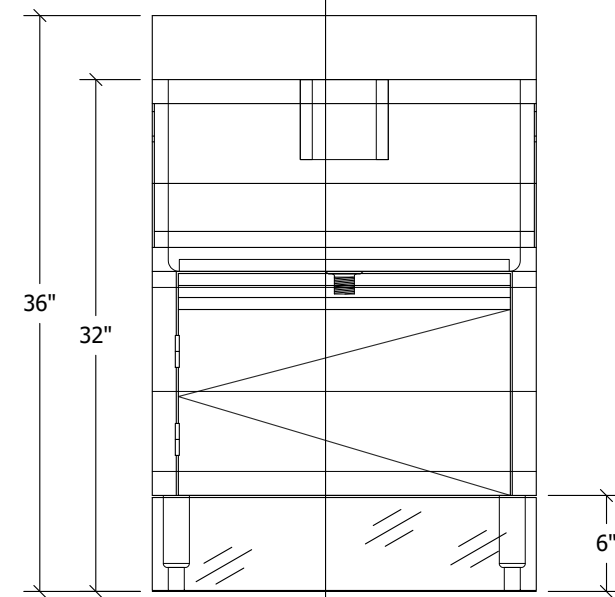
**1 EACH**



**2 EACH**

1 S# #

**DIVIDER DETAIL**



**SECTION VIEW**

Scale: # = 1'-0"