

MATERIAL BUY-OUT LIST					
ITEM #	DESCRIPTION	MAKE / PART NUMBER	QTY	SUPPLIED BY	INSTALLED BY
—	14" S/S DRAWER SLIDES	CHG / S26-0014	1	EUROBAR	EUROBAR

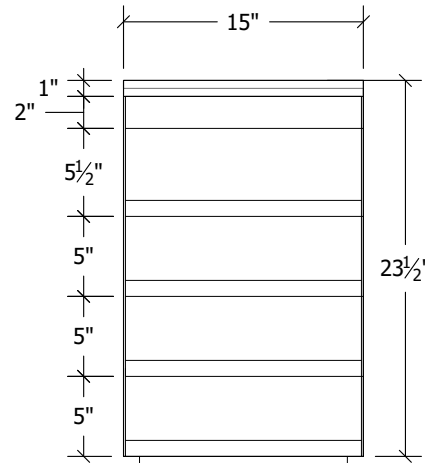
EBULD15 - LIQUOR STEP & STORAGE
 ITEM ##### - SCALE: # = 1'-0"

MATERIALS & FINISHES

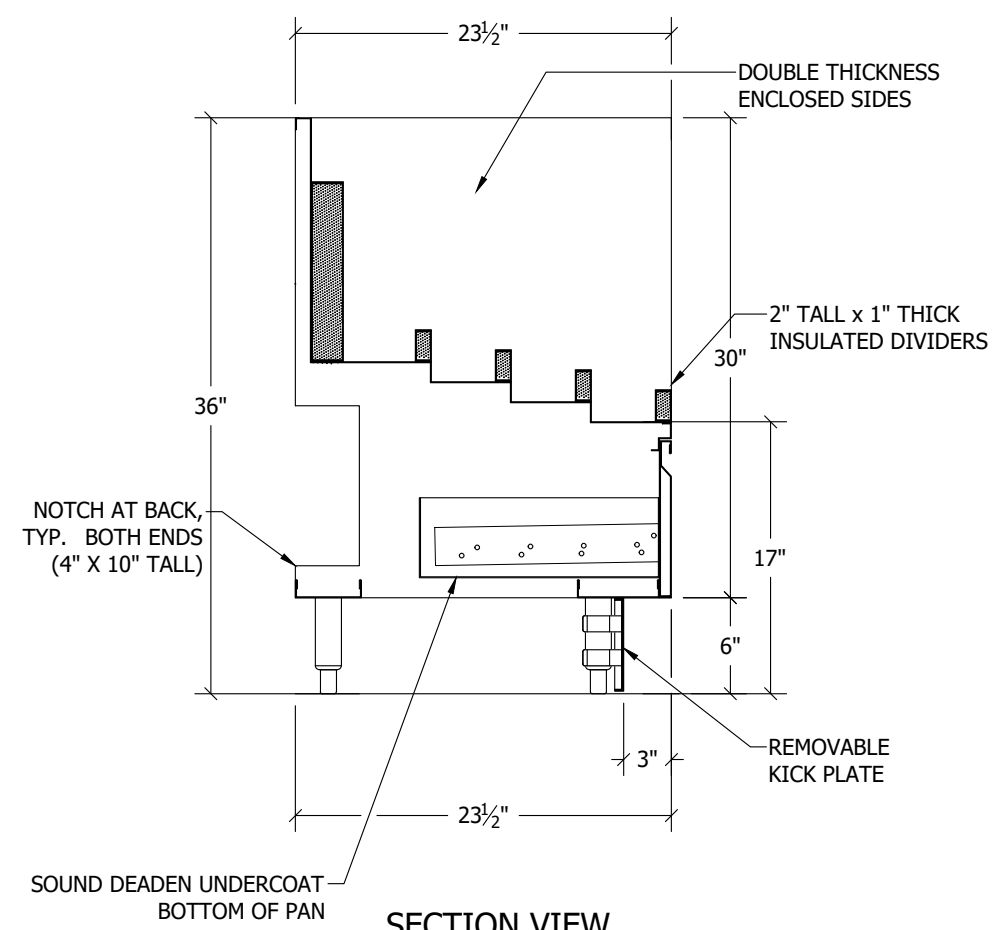
(WHERE APPLICABLE)

- **WORKING SURFACE:** 16GA 304 SERIES S/S, #4 FINISH
- **UNDERSTRUCTURE:** 16GA GALVANIZED
- **CABINET BODY:** 18GA S/S, #4 FINISH
- **DRAWER(S):** 18GA S/S, #4 FINISH
- **SOUND DEADEN UNDERCOAT REQUIRED AT BOTTOM OF DRAWER PAN ONLY (SEE NOTE BELOW)**
- **LEGS:** ϕ 1-5/8" 16GA S/S TUBING & ADJ. BULLET FEET
- **MOUNTING CLIPS:** 1 EA PER 24" OF BACKSPLASH

1 EACH

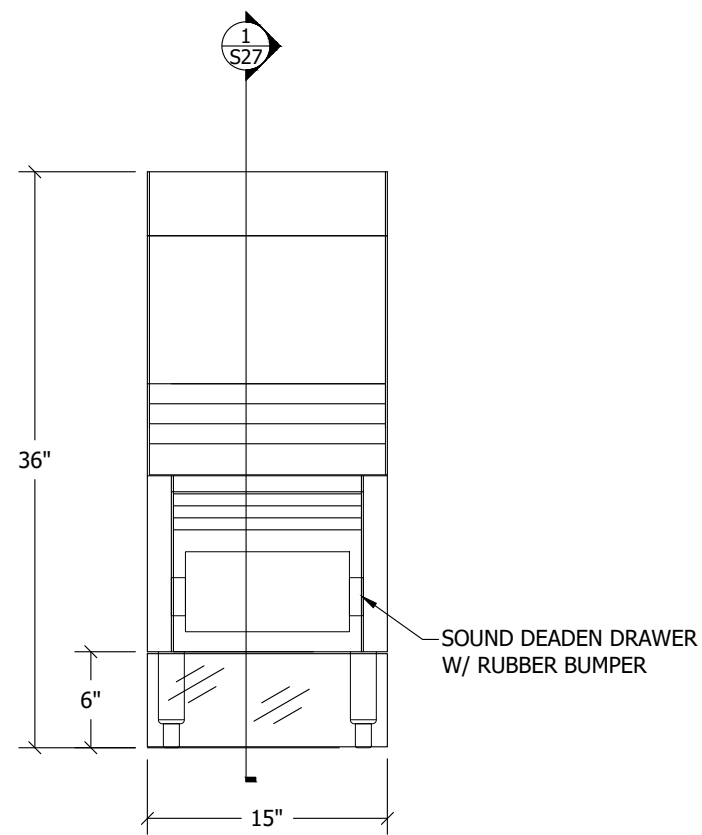


PLAN VIEW

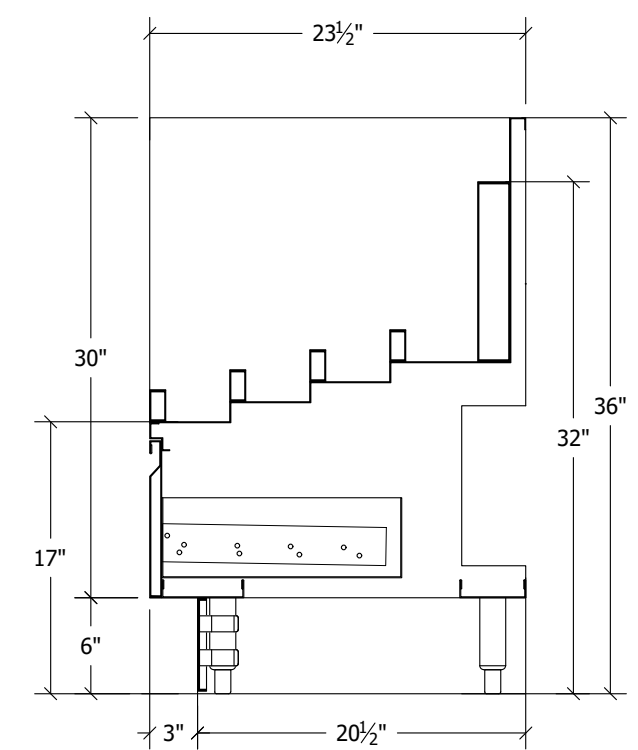


SECTION VIEW

Scale 1" = 1'-0"



FRONT VIEW



SIDE VIEW

..(Revit Families (Current)\Eurobar logo.png

CUSTOMER:

ITEM NO: EBULD15
 MAIN SCALE: 1
 SECTION SCALE: 1
 EUROBAR
 MASTER DRAWING
 11X17 PAGE FORMAT

27

REVISIONS

Proj. Mgr:
 Drawn By:
 Drawn Date: