

EuroBar®/©

Elevate Your Venue

Product Catalog



Why EuroBar?



100% Customizable

Fully Customizable: Modular design allows operators to personalize their EuroBar with as many modules as needed, in various sizes, to suit their unique operations.



Designed by an Expert

All EuroBar stations are designed by internationally acclaimed bartender Livio Lauro. He has spent over three decades working alongside the foremost global hospitality groups helping them create successful bars and profitable cocktail programs.



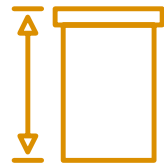
Quality Construction

Made with 304-grade stainless steel, the EuroBar is easy to sanitize and wipe clean, and resists rust and corrosion. It is the only bar on the market with a 14-gauge top and 18-gauge sides.



Designed for Effectiveness

EuroBar empowers bartenders with increased prep surface and ample storage for ingredients and small wares. Providing a versatile platform that enables mixologists to create a broader range of beverages.



Taller Units

Easy to work on: Our taller units reduce the need for the bartender to hunch down.



Recessed Speed Rail

By moving bottles to the right and left of the center station, bartenders can easily prepare drinks without the speed rack pressing into their legs.



About EuroBar

EuroBar is a cutting-edge bar equipment company with three unique bar stations that have been designed by renowned cocktail expert Livio Lauro and an impeccable line of backbar coolers. All the EuroBar stations represent the perfect blend of a European simplicity and American effectiveness.

Our Three Stations



EuroBar Classico



EuroBar Sportivo



EuroBar Alto

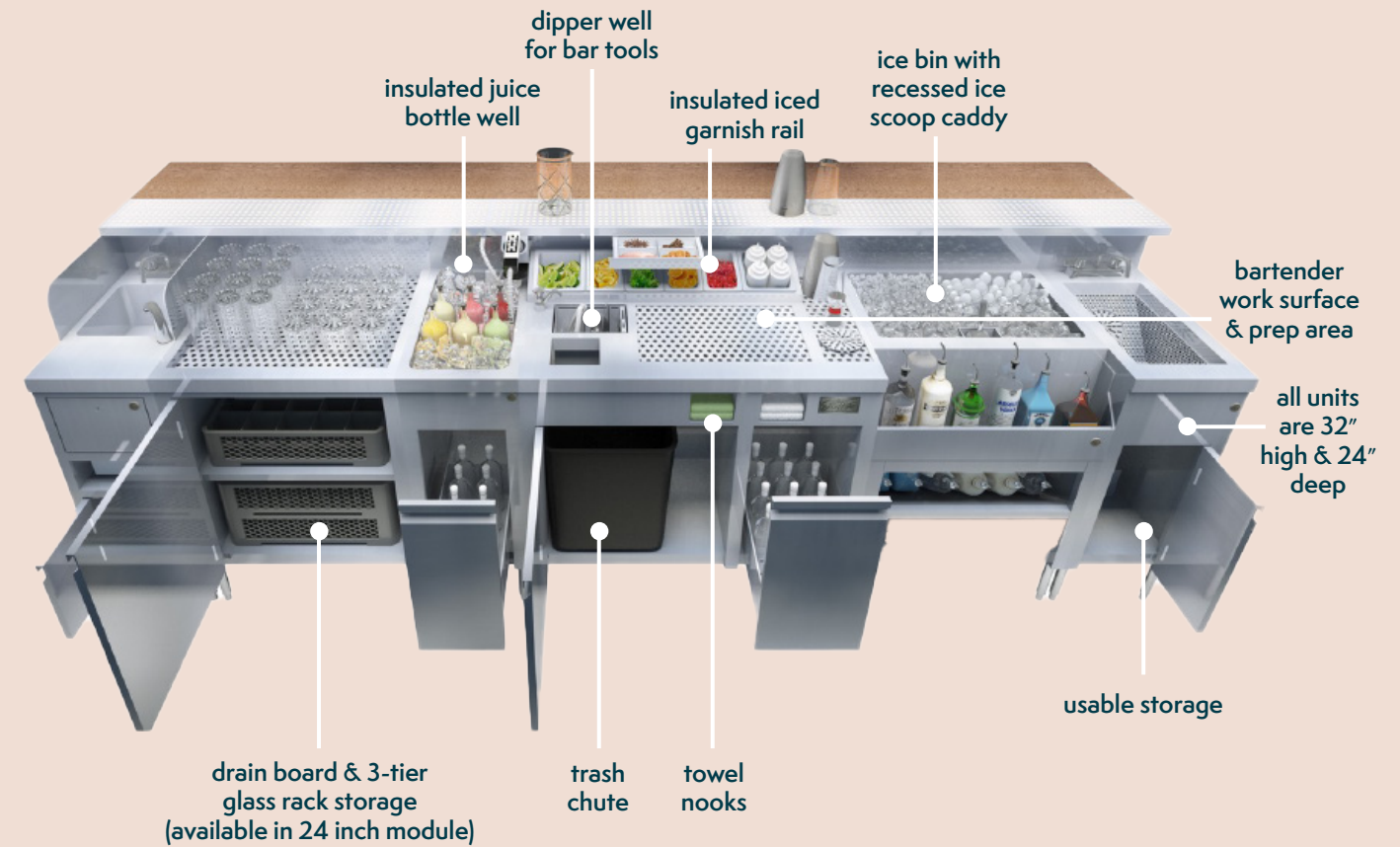


Classico Bar Station Features

- Classico Main Workstation includes:
 - Six integrated iced condiment trays
 - Rinser and drainboard
 - Rectangular dipper well
 - Trash chute with internal trash can (sold separately)
 - Eight bottle quick-grab drawer
 - Cabinet base for storage
- Consistent height of 32" and depth 24" for seamless integration
- Corrosion resistant 304 grade stainless steel throughout
- Durable 14-gauge top / 18-gauge body
- Dry waste chute at arm's reach
- Cabinet fits a 41 qt / 10-gallon trash bin
- Ice bin module is set to the side of the prep area preventing any spilling of ingredients or contamination into the ice
- Includes two recessed hand towel and bar rag caddies. The bottle drawer allows the bartender to easily prepare drinks without the speed rack on the main station pressing into knees and legs (or pour spouts rubbing on their pants).

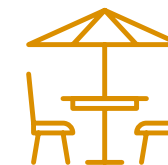


What makes the Classico unique?



Added Storage

Cabinet base and drawers on all modules add storage and hide plumbing



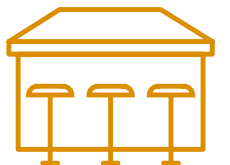
Outdoor Ready

304 Stainless steel, corrosion and rust-resistant



Quality Construction

14-Gauge top and 18-gauge base

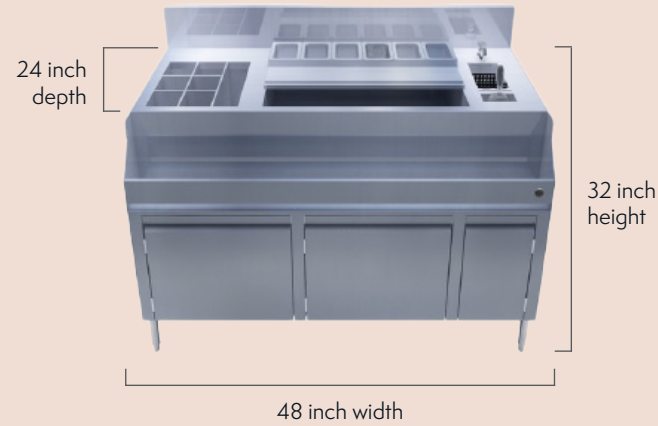


Chef's Counter

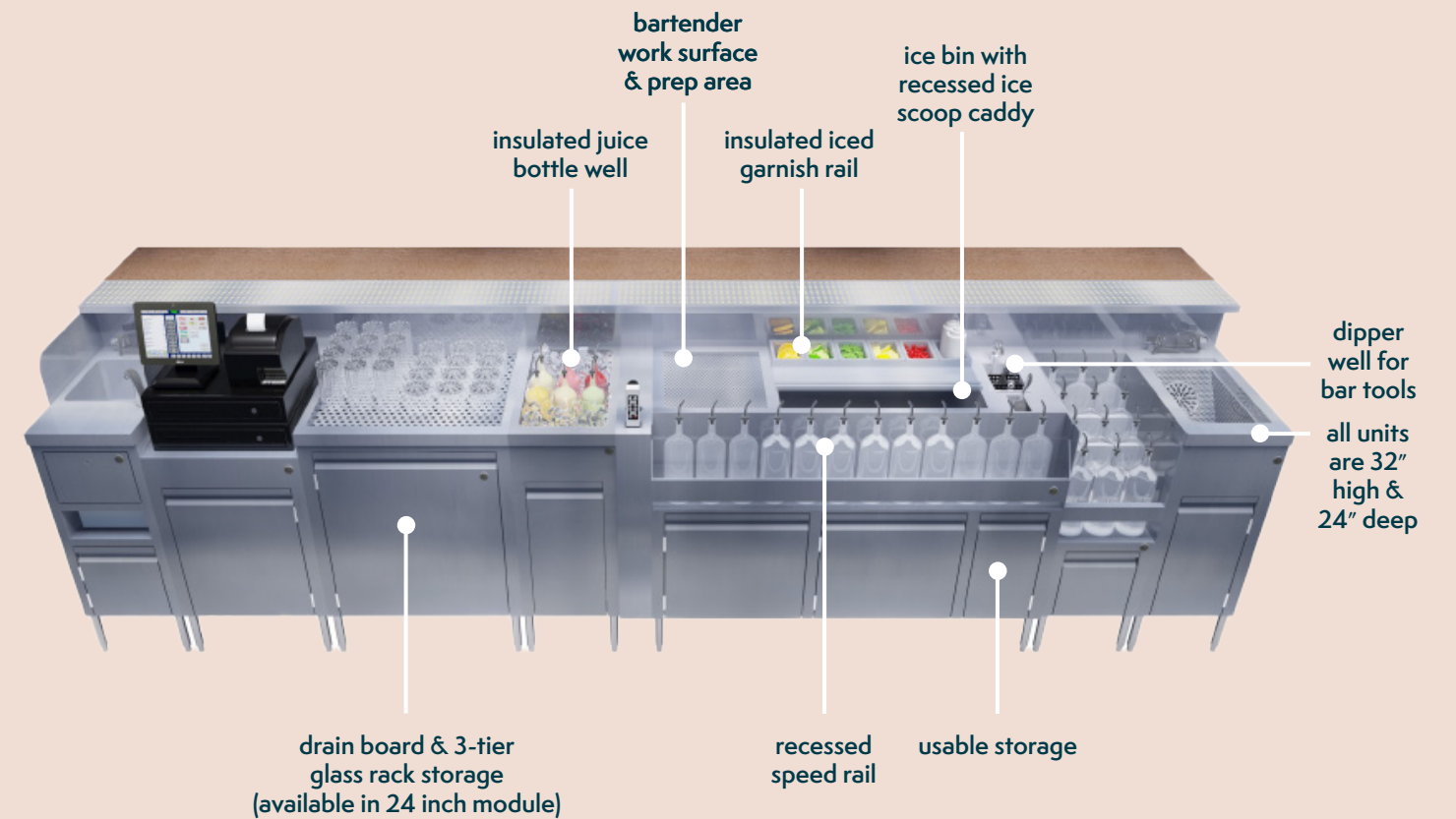
Counter for bartenders with added prep area

Sportivo Bar Station Features

- Sportivo Main Workstation includes:
 - Six integrated iced condiment trays
 - Rinser and drainboard
 - Rectangular dipper well
 - Insulated Ice Bin
 - Recessed 12-Bottle Speed Rail
 - Eight bottle quick-grab drawer
 - Cabinet base for storage
- Consistent height of 32" and depth 24" for seamless integration
- Corrosion resistant 304 grade stainless steel throughout
- Durable 14-gauge top / 18-gauge body
- Bottle Storage Capacity: 13 bottle speed rail, 8 bottle quick-grab drawer.
- Center Station also provides a drink prep area that can be converted into an insulated and drained juice well
- Center 24" ice bin with 90 lbs. of ice
- Center speed rack for optimal space usage and easy product grab with left and right hands

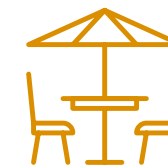


What makes the Sportivo unique?



Added Storage

Cabinet base and drawers on all modules add storage and hide plumbing



Outdoor Ready

304 Stainless steel, corrosion and rust-resistant



Quality Construction

14-Gauge top and 18-gauge base



High Volume Use

Great for bar service stations and higher volume bars

Alto Bar Station Features

- Alto Main Workstation includes:
 - Integrated iced condiment trays (sold separately)
 - Rinser and drainboard
 - Rectangular dipper well
 - Trash chute with internal trash can (sold separately)
 - Eight bottle quick-grab drawer
 - Utility drawer for bar accessories and other miscellaneous items
- Alto Main Workstation: Height 42" x Length 36" x Depth 24" to create a uniform height with bar and guest
- Corrosion resistant 304 grade stainless steel throughout
- Durable 14-gauge top / 18-gauge body
- Ice bin module is set to the side of the prep area resulting in no spilling of ingredients or contamination into the ice

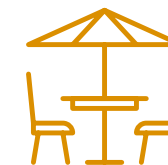


What makes the Alto unique?



Added Storage

Cabinet base and drawers on all modules add storage and hide plumbing



Outdoor Ready

304 Stainless steel, corrosion and rust-resistant



Quality Construction

14-Gauge top and 18-gauge base



Immersive Experience

Main station height of 42 inches is level with bar to create a unique guest experience

EuroBar Modules

Main Workstation



EuroBar Classico



EuroBar Sportivo



EuroBar Alto

Modules



Ice Bin

Model: EBIB12 (12" x 24")
Model: EBIB15 (15" x 24")
Model: EBIB18 (18" x 24")
Model: EBIB24 (24" x 24")



Bottle Well

Model: EBIBW12 (12" x 24")
Model: EBIBW15 (15" x 24")
Model: EBIBW18 (18" x 24")
Model: EBIBW124 (24" x 24")



Dump Sink

Model: EBDS12 (12" x 24")
Model: EBCDS12 (12" x 24")



Drain Board

Model: EBDB12: (12" x 24")
Model: EBDB15: (15" x 24")
Model: EBDB18: 18" x 24")
Model: EBDB24 (24" x 24")



Trash Bin

Model: EBTB12 (12" x 24")
Model: EBTB16 (16" x 24")



Free Space/POS

Model: EBPOS12
Model: EBPOS15
Model: EBPOS18
Model: EBPOS24



12" Underbar Liquor Display

Model: EBULD12
Model: EBULD15
Model: EBULD18
Model: EBULD24



Hand Sink

Model: EBHS12



12" Blender Station with Dump Sink

Model: EBDSBS12
Model: EBDSBS15
Model: EBDSBS18
Model: EBDSBS24



Underbar Trash Unit for Slim Jim

Model: EBTBC12

Additional Accessories

Modules



12" Underbar Free Space Unit

Model: EBFSU12
Model: EBFSU15
Model: EBFSU18
Model: EBFSU24



19" Deep 3-Comp Sink

60" length, 19" depth
Model: EB3CS19

24" Deep 3-Comp Sink

60" length, 24" depth
Model: EB3CS2460



Trash Bin Cabinet

Model: EBTBC16

Additional Accessories



Drainboard Top

Model: EBDBT28



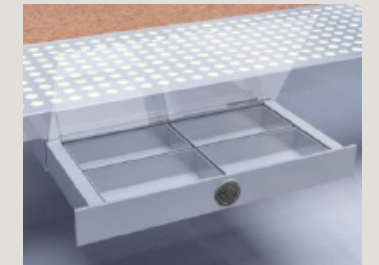
Soda Gun Filler Section

Model: EBSGF4



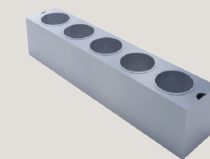
Retractable Soda Gun Filler Section

Model: EBSGF4R



Spice Caddy

Model: EBSC12



Bottle Holder for Condiment Tray



eurobarstation.com



Scan to learn more about EuroBar and how it can elevate your operation's bar experience.

V1 2024.09.13

EuroBar ®/© is used under license and is a registered trademark in the United States and Internationally. EuroBarNV LLC. All Rights Reserved.